

# Ready for using GSI Maps?

GSI Maps



✓ GSI Maps provides a variety of data! <https://maps.gsi.go.jp/>

## ● "History of Tokyo Station area" on double screen

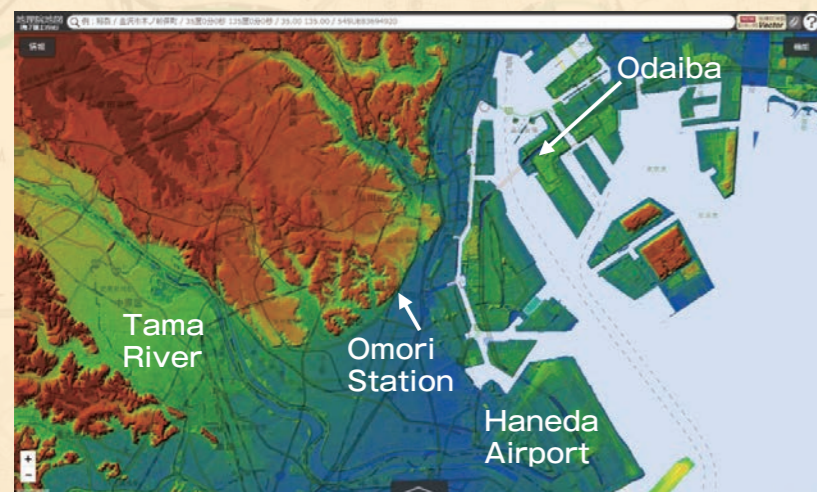


The photographs visibly show that the Sotobori-dori avenue was constructed after landfilling along the external fosse of the Edo Castle.

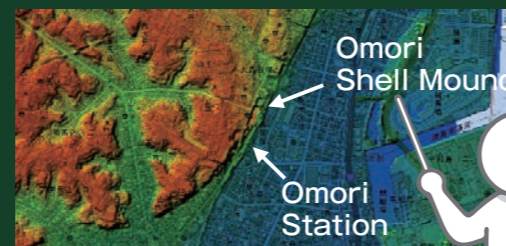


This black zone represents the external fosse.

## ● "Former coastal lines" visible on colorized elevation maps



The "self-made colorized elevation map" function for depicting detailed topographies enables users to recognize a cliff on the western side of Omori Station. The presence of the Omori Shell Mound suggests that a coastal line was located there in ancient times.



✓ You can view other data.



✓ Guidance video being publicized



<https://maps.gsi.go.jp/help/movie.html>

# Advancing utilization of geospatial information

## ● Basic Act on the Advancement of Utilizing Geospatial Information

The Basic Act on the Advancement of Utilizing Geospatial Information (NSDI Act) is a law for advancing intensive utilization of geospatial information and realizing a society where citizens can lead a safe and prosperous life.

The national administration has set up Committee for Advancing the Utilization of Geospatial Information with industry-academia-government collaboration so that the government can realize such a society. GSI is communicating and coordinating as the committee's secretariat with the entities concerned.

## ● Geospatial EXPO

Geospatial EXPO is an event where officials from industry-academia-government get together and present their services, products and the latest techniques related to geospatial information to the public through exhibitions, talks, symposiums and hands-on activities. GSI as host secretariat organizes and manages the Geospatial EXPO where it exhibits its policies and measures taken and holds the Geospatial Activity Competition\*.



\*"Geospatial Activity Competition" is an event where geospatial-information-related creative ideas and services, unique products and technologies are exhibited along with presentations. Creators of excellent works are given an award by the Director-General of GSI.

## ● GSI Maps Partner Network

"GSI Tiles", map data accessible at "GSI Maps", can be used on other systems and software. To support the creation of open-to-public innovations using the GSI Tiles, GSI established "the GSI Maps Partner Network" composed of groups and individuals that develop systems using GSI Tiles. Those groups and individuals exchange information and ideas with GSI regarding the utilization of GSI Tiles. These efforts have brought about new utilization of GSI Tiles in various fields such as disaster prevention, meteorology and systems for use by local governments.

<https://maps.gsi.go.jp/pn/>

