

I. NUMBER OF WORKERS PER FACTORY
VALUE OF PRODUCT SHIPMENTS BY INDUSTRIES

1. Number of Workers Per Factory

The number of workers engaged in manufacturing was 11,549,000 as of December 31, 1986. Of these workers, the number employed at factories with 4 employees or more was 10,893,000, 94.3% of the total. Classified into three types of industry, the proportion of workers in the processing and assembling industries was 38.2%, 31.4% for life-related and other industries, and 30.4% for industries treating basics and materials.

By prefecture, Aiti had 977,000 workers, 8.5% of the total for Japan, Ōsaka had 952,000 (8.2%), Tōkyō had 933,000 (8.1%) and Kanagawa had 728,000 (6.3%).

The average number of workers per factory with 4 workers or more was 25.0.

Classified by industry, chemical industries had the highest average number of workers with 72.5; followed by transportation equipment industries, 61.2 and iron and steel industries, 56.9. Lumber and wood products had the lowest average number of workers with 12.3; followed by furniture and fixture industries, 12.7 and the leather, related products and fur industry with 13.1 workers. Classified by Si, Mati and Mura, the largest average number of workers was 276.6 persons at Wagi Tyō in Yamaguti Prefecture, 270.8 persons at Hutyū Tyō in Hiroshima Prefecture and 183.9 persons at Kōyagi Tyō in Nagasaki Prefecture. There were 16 Si, Mati and Mura with 100 workers or more engaged in manufacturing and only 19 Si, Mati and Mura had no factories with 4 workers or more.

[Salient Points of the Legend and Map Compilation]

This map shows the number of workers per factory with 4 workers or more December 31, 1986. Any Si, Mati or Mura which has only 1 or 2 factories is shown as a Si, Mati or Mura for which no data was available, to preserve privacy.

1. Value of Product Shipments by Industries

The total value of product shipments was ¥257,900,000 million, with the value of product shipments from factories with 4 workers or more accounting for ¥254,700,000 million, or 98.8% of the total. Classified into three types of industry, 40.8% was from the processing and assembling industries, 36.1% from industries treating basics and materials, and 23.1% from life-related industries.

By prefecture, Aiti accounted for 10.8% with ¥27,500,000 million, Kanagawa for 9.0% (¥23,000,000 million), Ōsaka for 8.2% (¥20,900,000 million) and Tōkyō for 7.2% (¥18,400,000 million).

[Salient Points of the Legend and Map Compilation]

This map shows the value of product shipments for 1986 from factories with 4 workers or more.

[Source]

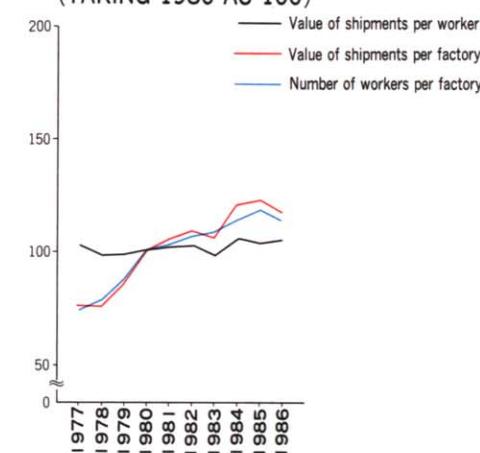
1. Minister of International Trade and Industry, *Census of Manufactures, Report by Industry, 1986*

THE NUMBER OF FACTORIES ENGAGED IN MANUFACTURING, THE NUMBER OF WORKERS AND THE VALUE OF PRODUCT SHIPMENTS (1986)

Industry	Number of factories		Number of workers		Value of shipments		Value added		Value of shipments per factory (in thousand yen)	Value of shipments per worker (in thousand yen)
	Number	Percentage (%)	Number	Percentage (%)	Amount (in million yen)	Percentage (%)	Amount (in million yen)	Percentage (%)		
Total	436,009	100.0	10,892,501	100.0	254,688,643	100.0	89,205,388	100.0	584,136	23,382
Foodstuffs	46,421	10.6	1,051,830	9.7	20,763,905	8.2	6,848,886	7.7	447,296	19,741
Beverages, feed and tobacco	5,724	1.3	135,868	1.2	8,946,347	3.5	2,076,468	2.3	1,562,954	65,846
Textiles	34,519	7.9	591,301	5.4	7,654,322	3.0	2,886,342	3.2	221,742	12,945
Clothing and related products	31,583	7.2	558,847	5.1	3,826,668	1.5	1,801,591	2.0	121,162	6,847
Lumber and wood products	21,602	5.0	265,308	2.4	3,881,859	1.5	1,401,088	1.6	179,699	14,632
Furniture and fixtures	17,589	4.0	223,568	2.1	2,934,052	1.2	1,265,146	1.4	166,812	13,124
Pulp, paper and related products	11,807	2.7	276,512	2.5	7,218,151	2.8	2,439,692	2.7	611,345	26,104
Published, printed products and related products	29,580	6.8	527,032	4.8	9,498,455	3.7	4,852,755	5.4	321,111	18,023
Chemicals	5,463	1.3	396,300	3.6	19,208,615	7.5	8,536,318	9.6	3,516,129	48,470
Petroleum and coal products	1,063	0.2	36,964	0.3	8,466,778	3.3	927,057	1.0	7,964,984	229,055
Plastic products	18,861	4.3	397,180	3.6	8,134,920	3.2	2,980,092	3.3	431,309	20,482
Rubber products	5,862	1.3	167,540	1.5	2,965,776	1.2	1,220,071	1.4	505,932	17,702
Tanned leather and related products, and furs	5,996	1.4	78,672	0.7	1,066,406	0.4	398,021	0.4	177,853	13,555
Ceramic, stone, clay and glass products	21,024	4.8	460,076	4.2	8,736,301	3.4	3,993,116	4.5	415,839	18,989
Iron and steel products	6,480	1.5	368,506	3.4	14,783,237	5.8	4,269,234	4.8	2,281,364	40,117
Nonferrous metal products	4,195	1.0	161,839	1.5	5,527,770	2.2	1,495,548	1.7	1,317,704	34,156
Fabricated metal products	49,392	11.3	782,107	7.2	13,118,073	5.2	5,541,703	6.2	265,591	16,773
Machinery and accessories (including munitions)	43,258	9.9	1,118,506	10.3	23,453,742	9.2	9,473,393	10.6	542,183	20,967
Electrical machinery, equipment and supplies	35,167	8.1	1,865,657	17.1	41,228,221	16.2	14,722,792	16.5	1,172,355	22,098
Transportation equipment	14,964	3.4	916,358	8.4	35,030,120	13.8	8,643,458	9.7	2,340,960	38,228
Precision instruments	7,603	1.7	258,536	2.4	4,225,509	1.7	1,763,949	2.0	555,769	16,344
Other products	17,856	4.1	253,994	2.3	4,019,417	1.6	1,668,669	1.9	225,102	15,825

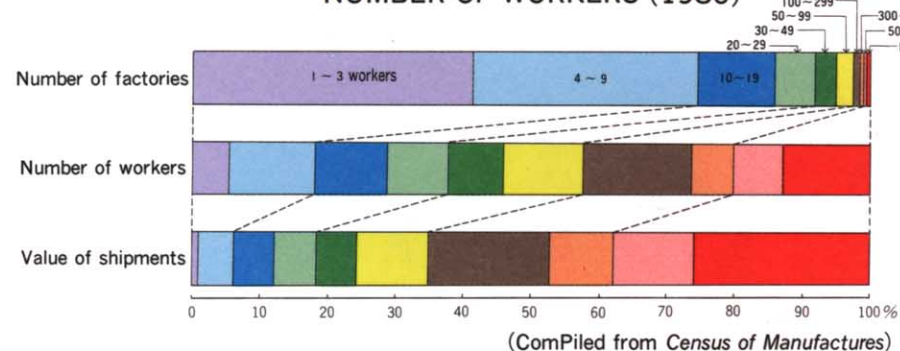
(Compiled from Census of Manufactures)

CHANGES IN THE VALUE OF SHIPMENTS PER FACTORY AND PER WORKER (TAKING 1980 AS 100)



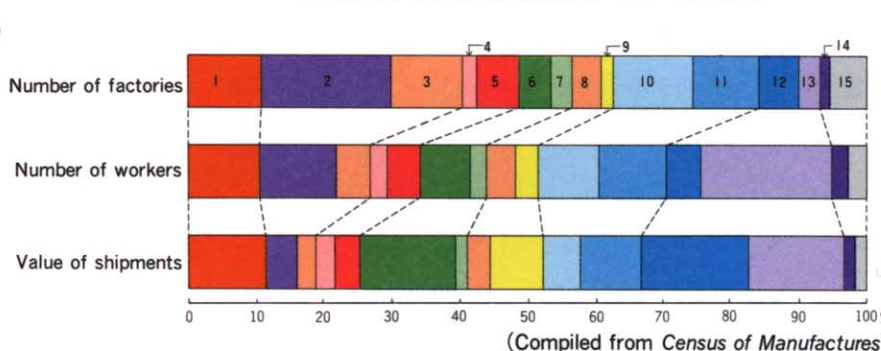
(Compiled from Census of Manufactures)

STRUCTURE ACCORDING TO NUMBER OF WORKERS (1986)



(Compiled from Census of Manufactures)

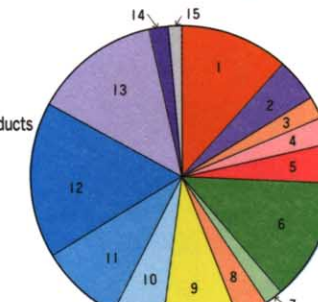
STRUCTURE BY INDUSTRY (1986)



(Compiled from Census of Manufactures)

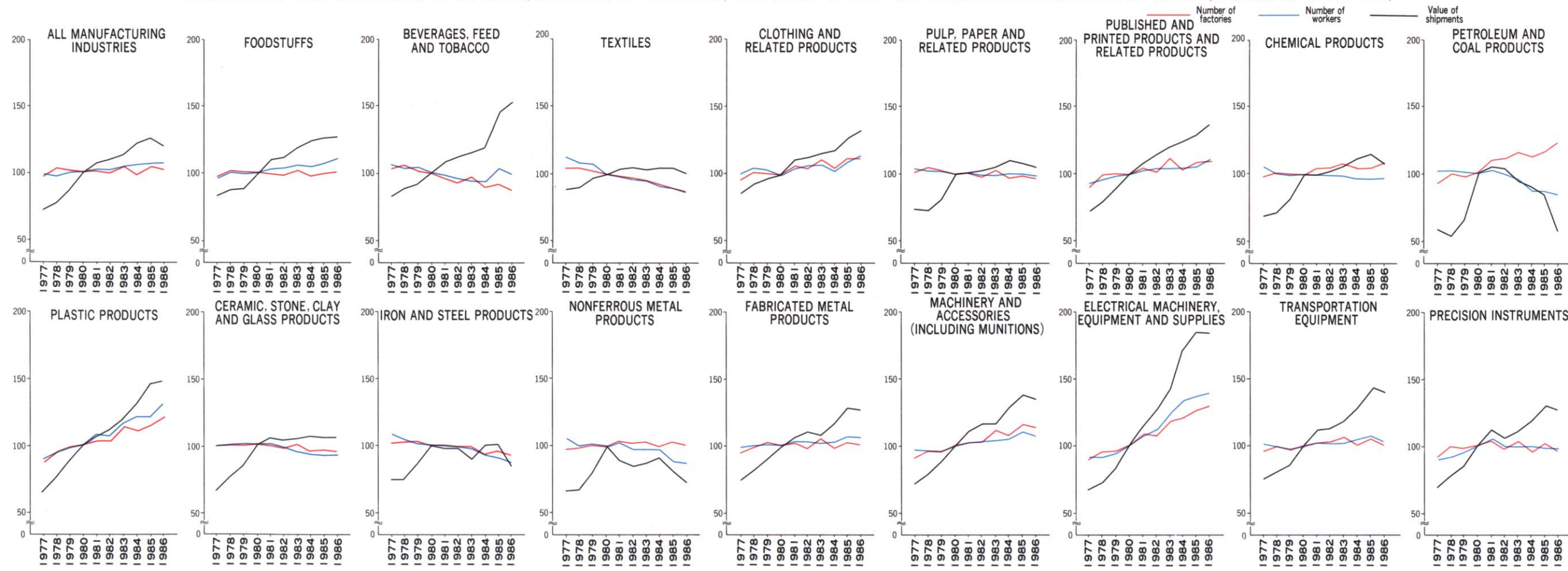
RATIO OF SHIPMENT VALUE BY INDUSTRY (1986)

1. Foodstuffs, beverages, feed and tobacco
2. Textile, clothing and related products
3. Lumber and wood products, furniture and fixtures
4. Paper, pulp and related products
5. Publishing, printing and related industries
6. Chemicals, plastic products, petroleum products and coal products
7. Rubber products, tanned leather, related products and furs
8. Ceramic, stone, clay and glass products
9. Iron and steel, and nonferrous metal products
10. Fabricated metal products
11. Machinery and accessories (including munitions)
12. Electrical machinery, equipment and supplies
13. Transportation equipment
14. Precision instruments
15. Others



(Compiled from Census of Manufactures)

CHANGES IN THE NUMBER OF FACTORIES, NUMBER OF WORKERS, SHIPMENT VALUE FOR THE MANUFACTURING INDUSTRY (TAKING 1980 AS 100)



(Compiled from Census of Manufactures)

