

Overview of GSI

History

(year)

(year)	Ministry of Popular Affairs・Home Ministry	Ministry of Public Works	Ministry of Defense・Army Ministry・General Staff of the Imperial Army
1869	The Cadastral Map Section established in the Ministry of Civil Services to compile topographic maps and gather geographical data		
1871		Surveying Department established in the Ministry of Public Works to triangulate Tokyo area	The Intelligence Group established in the Army Ministry, taking charge of geographical surveying and cartography
1874		Transferred the Surveying Department to the Home Ministry	
1875	Initiation of major triangulation by the Home Ministry		
1883			Initiation of first-order triangulation survey and first-order leveling
1884	Integration of the Home Ministry's major triangulation project into the General Staff Office		The Survey Bureau established in the General Staff Office

1888 The Survey Bureau became the Imperial Land Survey, which became the Land Surveying Department in the General Staff Office the following year.



Land Surveying Department (Tokyo)

- 1891 Origin of the Vertical Control Network established in the General Staff Office in Miyazekaza, Tokyo
- 1892 Origin of the Japanese Horizontal Control Network established in Azabu, Tokyo (center of the meridian circle of the Tokyo Observatory)
- 1908 Launch of the development of 1:25,000 topographic maps
- 1915 First order triangulation survey completed
- 1925 1:50,000 topographic maps of entire Japan finalized

Home Ministry, Ministry of Construction, and Ministry of Land, Infrastructure, Transport, and Tourism

1945 The Geographical Survey Institute founded as an ancillary organ of the Home Ministry



Geographical Survey Institute (Chiba, Chiba Pref.)

- 1948 The Ministry of Construction established, under which GSI is placed as an ancillary organ
- 1949 The Survey Act promulgated
- 1953 The Long-Term Plan for Basic Surveys publicly announced (from 1953 to 1962) Revised about every 10 years thereafter
- 1956 Participation in Antarctic research expedition

1858 Relocation from Chiba, Chiba Pref. to Meguro, Tokyo



Geographical Survey Institute (Tokyo)

- 1960 The Japanese name of the Geographical Survey Institute, Chirichosajo, changed to Kokudochiriin
- 1969 The Coordinating Committee for Earthquake Prediction established
- 1974 Launch of Precise geodetic network surveys
- 1979 Relocation from Tokyo to Tsukuba, Ibaraki Pref.

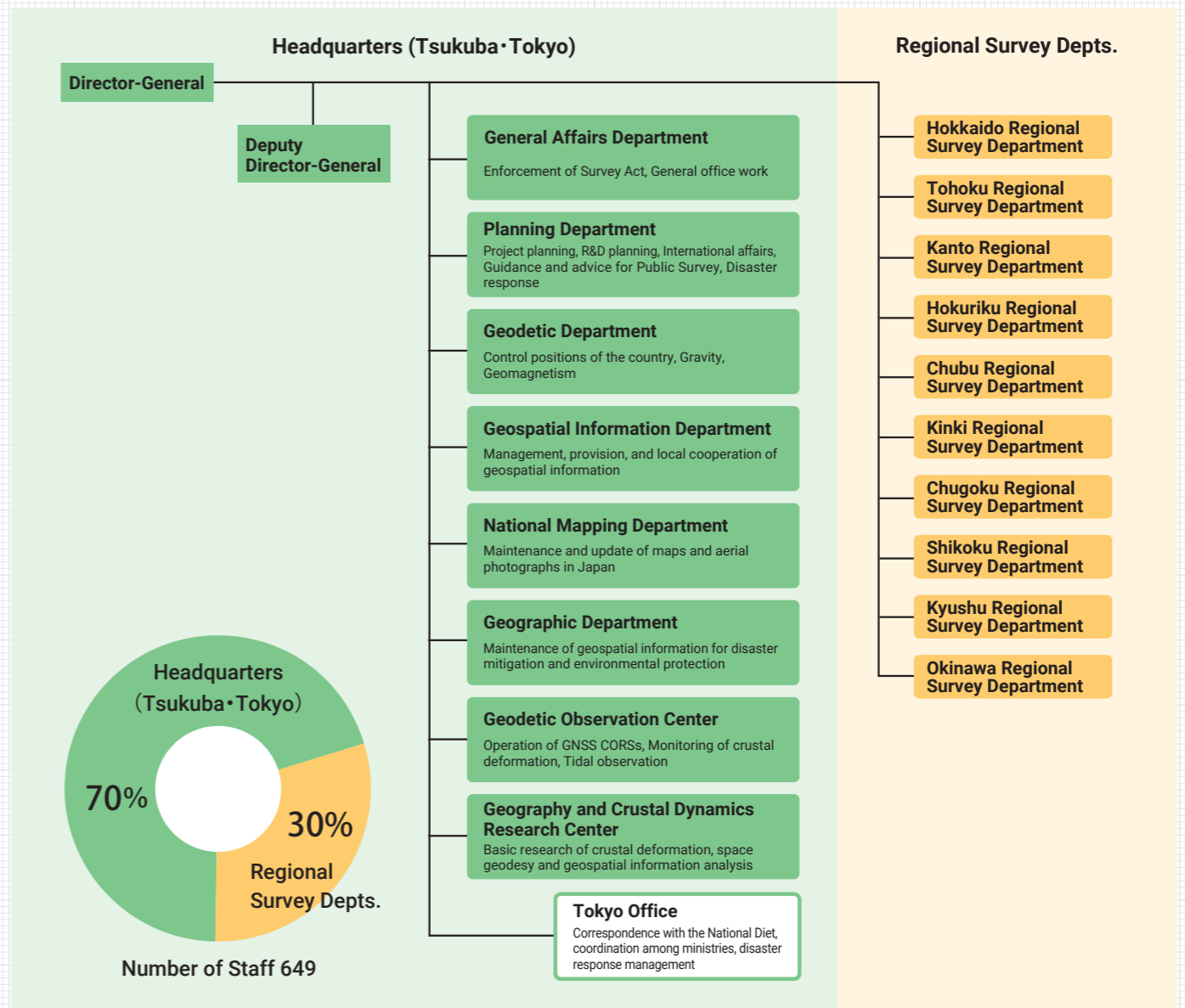


GSI Headquarters (Tsukuba)

- 1981 VLBI facility installed
- 1983 1:25,000 topographic maps completed (except for some remote islands)
- 1984 GSI designated as the special organization of the Ministry of Construction
- 1994 Launch of nationwide GPS continuous observation
- 1996 Opening of the Science Museum of Map and Survey
- 2001 The Ministry of Land, Infrastructure and Transport established with GSI as one of its special organization, GSI nominated as a designated administrative organ under the Disaster Countermeasures Basic Act, Revision of Survey Act (Adoption of the World Geodetic System)

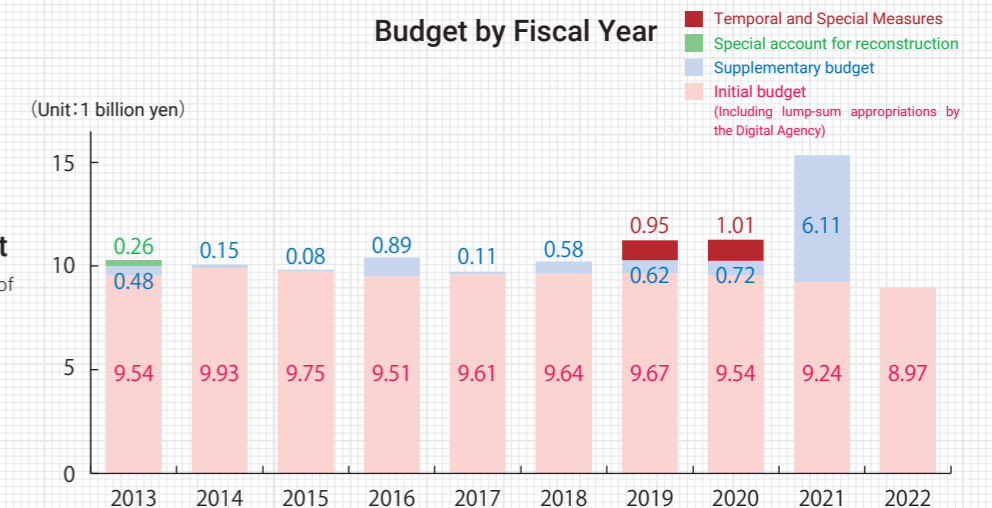
- 2002 Nationwide GNSS CORS network completed
- 2003 Launch of Digital Japan Web System (current GSI Maps) Digital Map 25,000 published (National Geospatial Data Framework)
- 2007 The Survey Act revised (designed to promote the utilization of survey results), The Basic Act on the Advancement of Utilizing Geospatial Information (NSDI Act) promulgated
- 2011 Numerical coordinates of Origin of the Japanese Horizontal Control Network and Origin of the Japanese Vertical Control Network revised as a result of the effects caused by the "2011 off the Pacific coast of Tohoku Earthquake"
- 2014 Digital Topographic Map 25,000 and 1:25,000 topographic maps completed nationwide, The Long-Term Plan for Basic Surveys announced (from 2014 to 2023) Ishioka VLBI observing facility established
- 2015 Digital Topographic Map 200,000 and Digital Map (Basic Geospatial Information 200,000) completed nationwide
- 2019 The Science Museum of Map and Survey welcomed one million visitors
- 2020 Tokyo Office was established
- 2022 Cabinet decision was made to Basic Plan for the Advancement of Utilizing Geospatial Information (4th Term)

Organization



Budget

- FY2022 budget: 8,970 million yen
- FY2021 supplementary budget (Reduction of damage through development of map information, etc.): 6,112 million yen



※ Totals may not match due to rounding.