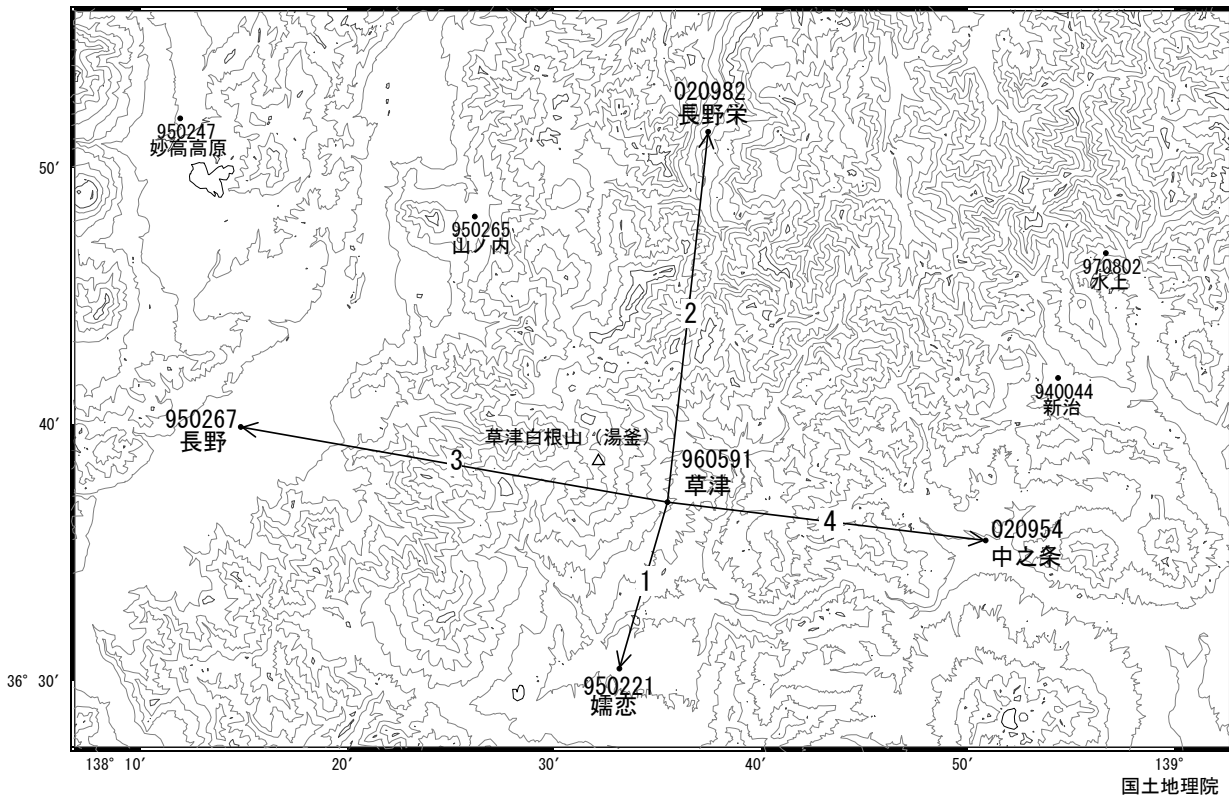


# 草津白根山周辺の地殻変動

—GNSS連続観測結果—

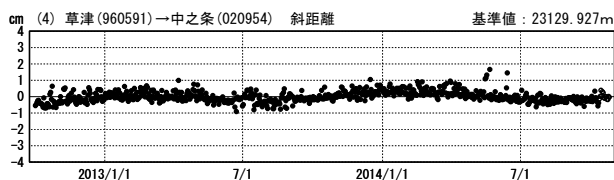
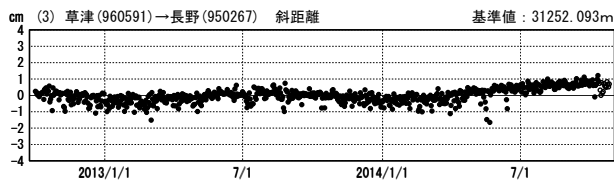
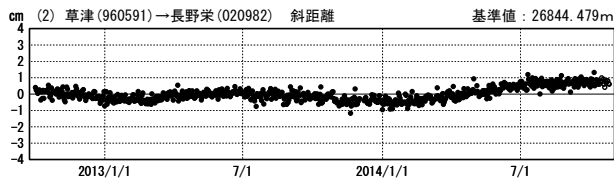
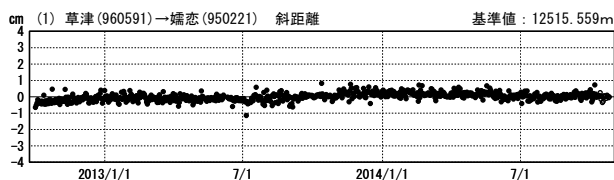
2014年春頃から、湯釜付近の膨張を示す地殻変動が見られます。

草津白根山周辺 GNSS連続観測基線図



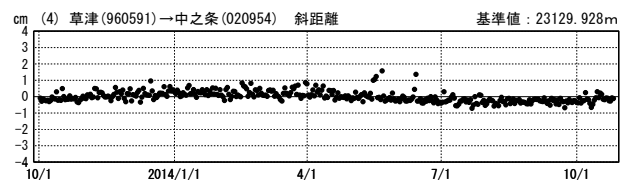
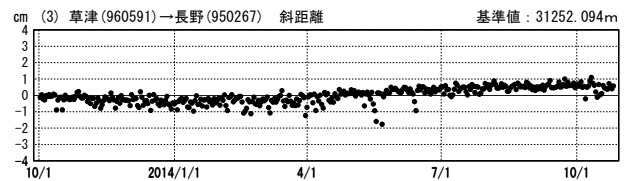
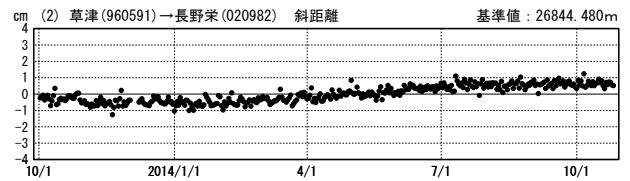
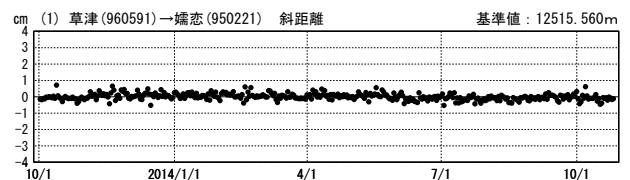
基線変化グラフ

期間: 2012/10/01~2014/10/25 JST



基線変化グラフ

期間: 2013/10/01~2014/10/25 JST



●---[F3:最終解] ○---[R3:速報解]