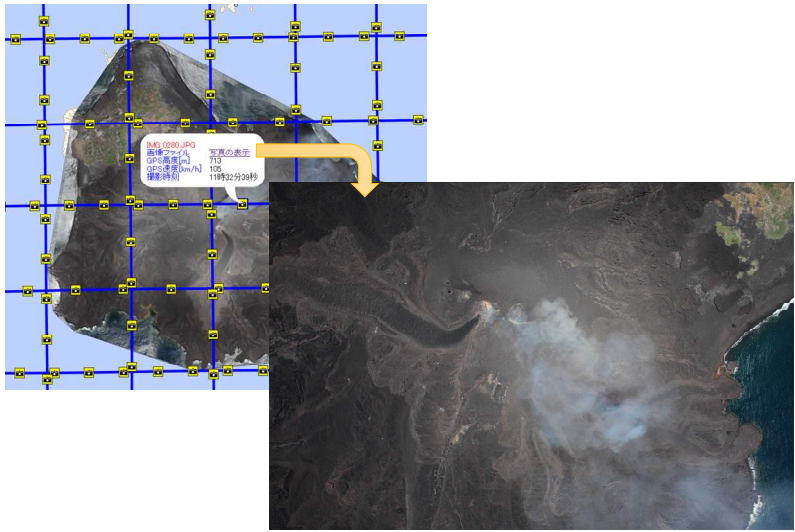


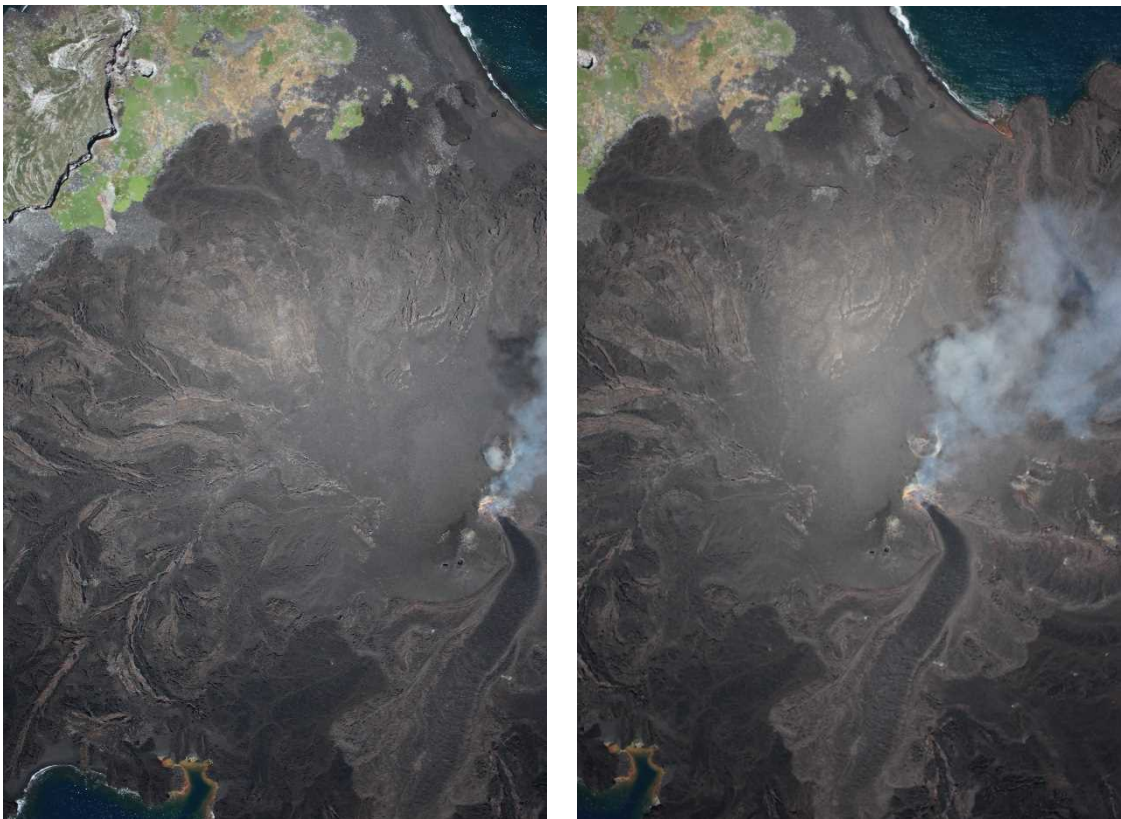
Aerial photographs (area around Nishinoshima Island)



Display of aerial photographs from photography points

GSI Maps URL : <http://portal.cyberjapan.jp/site/mapuse4/?tab=3>

The aerial photographs that were taken can be displayed from the camera icons showing photography points. Since many photographs were taken, every sixth photographs are presented



Example of aerial photographs aligned to enable stereoscopy(July 4th, 2014 Photography)

Images are rotated so that north is at the top.