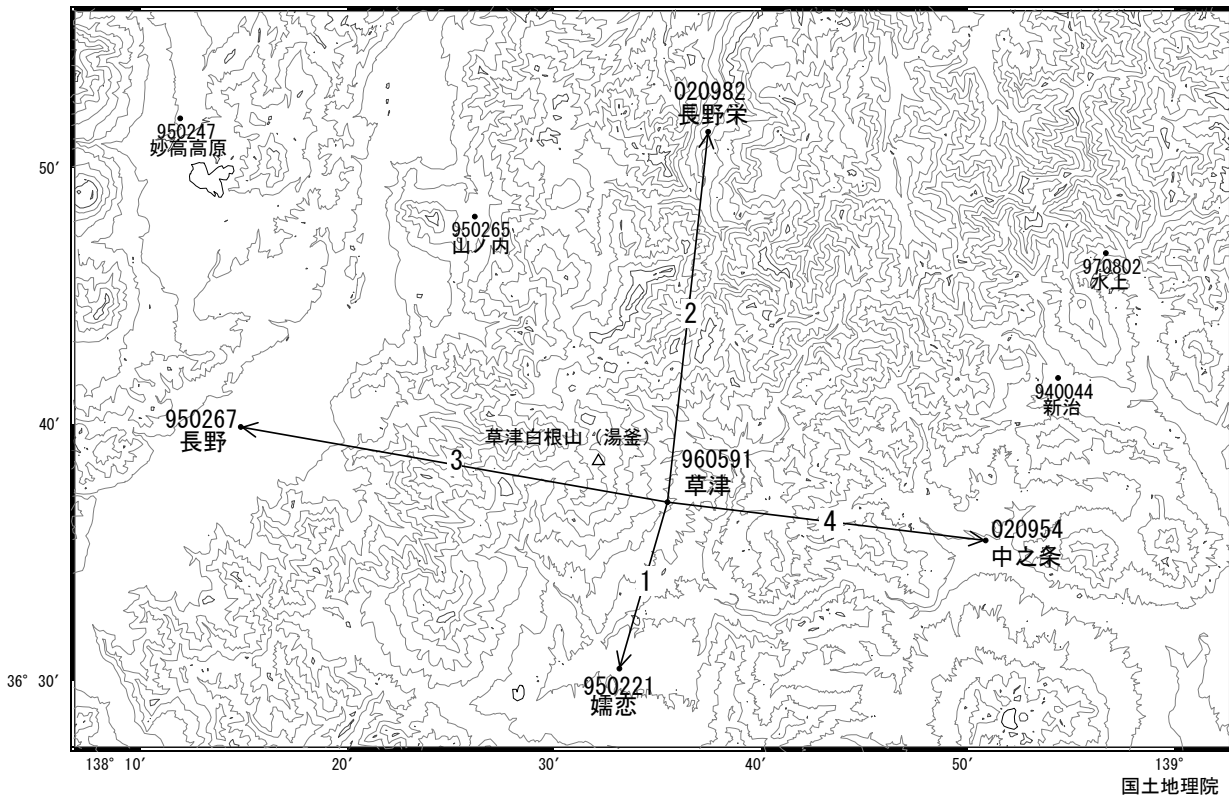


草津白根山周辺の地殻変動

—GNSS連続観測結果—

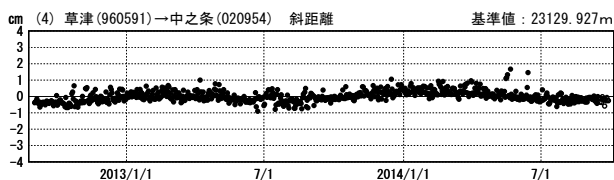
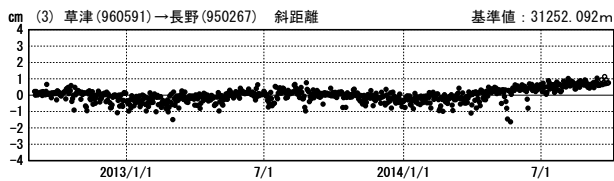
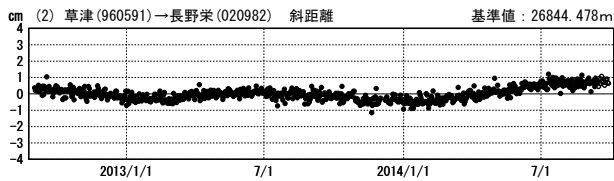
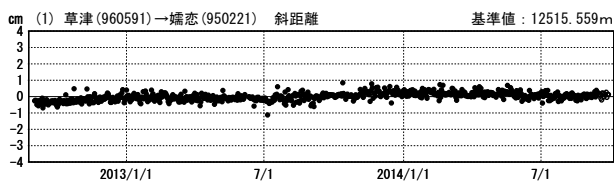
湯釜付近の膨張を示す地殻変動が見られます。

草津白根山周辺 GNSS連続観測基線図



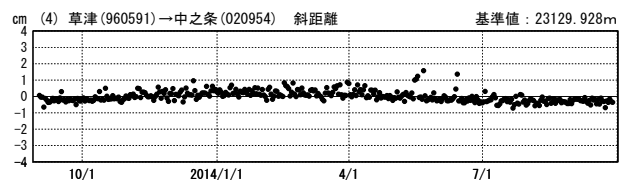
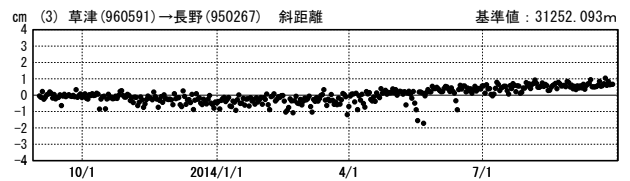
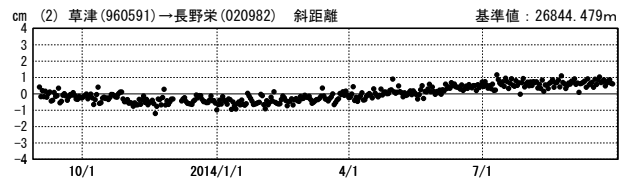
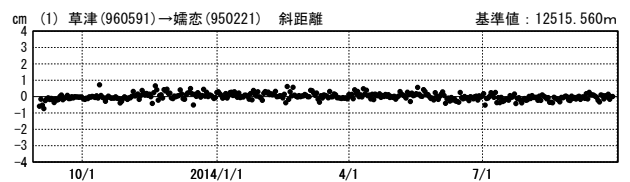
基線変化グラフ

期間：2012/09/01～2014/09/27 JST



基線変化グラフ

期間：2013/09/01～2014/09/27 JST



●— [F3:最終解] ○— [R3:速報解]